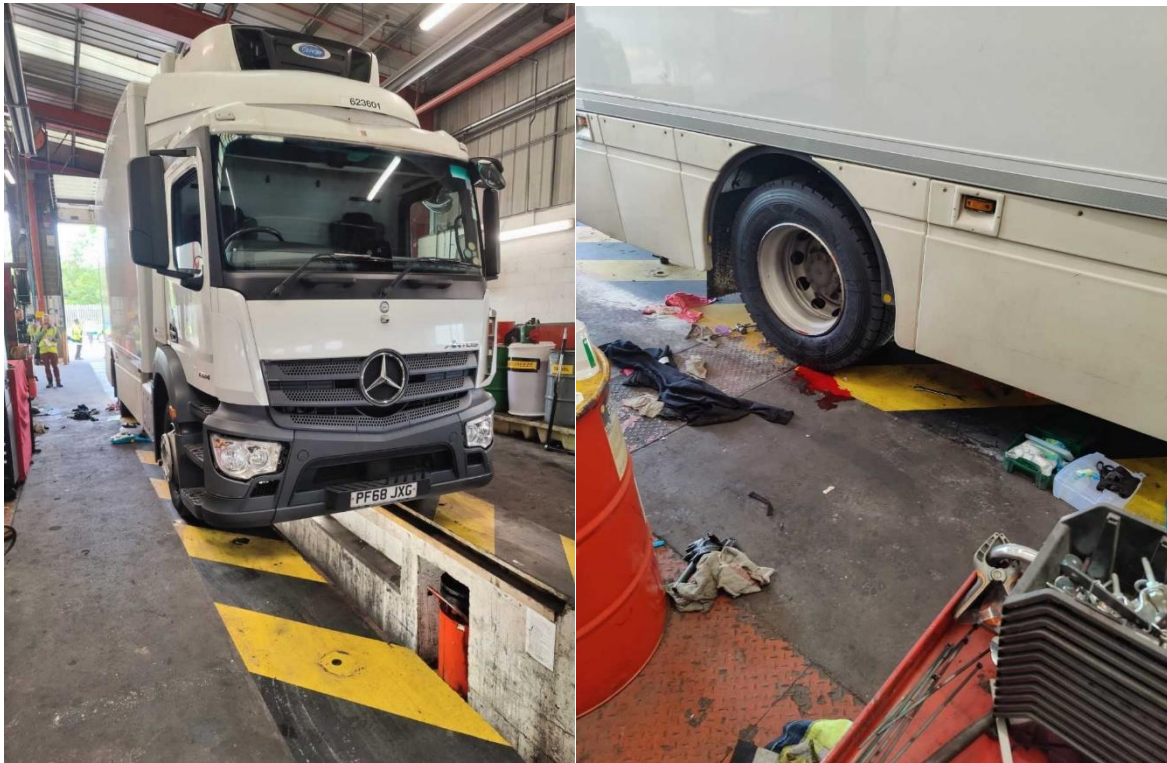


## Appendix C Health and Safety at work- a case study

The council received a notification from the police of a serious injury at a local distribution centre. A vehicle mechanic had a life-threatening crushing injury to the head when working on the suspension of a commercial vehicle. Officers attended the scene and conducted an investigation taking formal action to remedy further potentially fatal accidents. The injured mechanic made a full recovery.



Health and safety functions are mainly reactive, gaining experience in this area can be difficult due to less regular proactive work and the types of premises and activities very wide ranging. The impact of a large investigation such as above also impacts a small team severely.